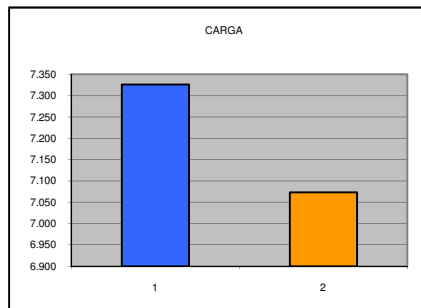
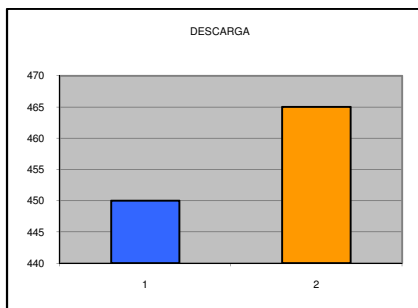


ENTRADA DE VEHICULOS DE CARGA Y DESCARGA

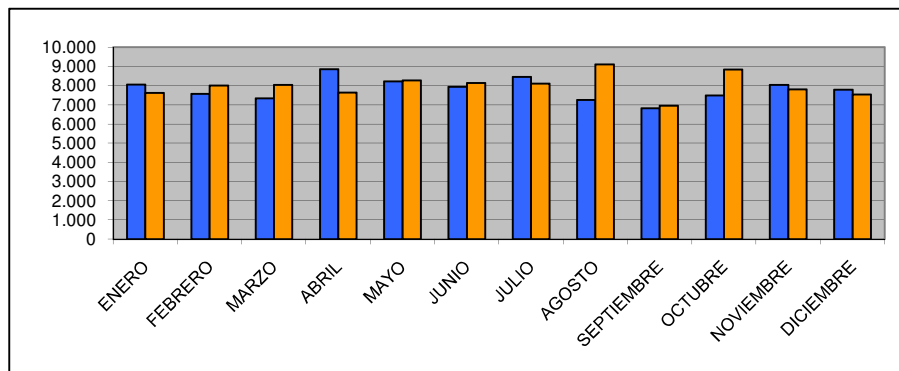
DICIEMBRE 2013

| VEHICULOS | 2013 | 2012 | ABSOLUTA | RELATIVA |
|--------------|--------------|--------------|------------|-------------|
| DESCARGA | 450 | 465 | -15 | -3,23 |
| CARGA | 7.326 | 7.073 | 253 | 3,58 |
| TOTAL | 7.776 | 7.538 | 238 | 3,16 |

GRAFICA MENSUAL



GRAFICA ANUAL



■ AÑO 2013
■ AÑO 2012

| MES | VEHICULOS | 2013 | 2012 | %S/2012 |
|------------------|--------------|---------------|---------------|--------------|
| ENERO | DESCARGA | 451 | 477 | -5,45 |
| | CARGA | 7.597 | 7.136 | 6,46 |
| | TOTAL | 8.048 | 7.613 | 5,71 |
| FEBRERO | DESCARGA | 893 | 957 | -6,69 |
| | CARGA | 14.714 | 14.651 | 0,43 |
| | TOTAL | 15.607 | 15.608 | -0,01 |
| MARZO | DESCARGA | 1.321 | 1.463 | -9,71 |
| | CARGA | 21.613 | 22.180 | -2,56 |
| | TOTAL | 22.934 | 23.643 | -3,00 |
| ABRIL | DESCARGA | 1.849 | 1.956 | -5,47 |
| | CARGA | 29.940 | 29.324 | 2,10 |
| | TOTAL | 31.789 | 31.280 | 1,63 |
| MAYO | DESCARGA | 2.346 | 2.496 | -6,01 |
| | CARGA | 37.652 | 37.595 | 0,15 |
| | TOTAL | 39.998 | 40.091 | -0,23 |
| JUNIO | DESCARGA | 2.871 | 3.113 | -7,77 |
| | CARGA | 45.062 | 45.111 | -0,11 |
| | TOTAL | 47.933 | 48.224 | -0,60 |
| JULIO | DESCARGA | 3.565 | 3.824 | -6,77 |
| | CARGA | 52.818 | 52.494 | 0,62 |
| | TOTAL | 56.383 | 56.318 | 0,12 |
| AGOSTO | DESCARGA | 4.276 | 4.639 | -7,82 |
| | CARGA | 59.360 | 60.786 | -2,35 |
| | TOTAL | 63.636 | 65.425 | -2,73 |
| SEPTIEMBRE | DESCARGA | 4.941 | 5.218 | -5,31 |
| | CARGA | 65.512 | 67.150 | -2,44 |
| | TOTAL | 70.453 | 72.368 | -2,65 |
| OCTUBRE | DESCARGA | 5.537 | 5.787 | -4,32 |
| | CARGA | 72.401 | 75.416 | -4,00 |
| | TOTAL | 77.938 | 81.203 | -4,02 |
| NOVIEMBRE | DESCARGA | 6.032 | 6.292 | -4,13 |
| | CARGA | 79.945 | 82.704 | -3,34 |
| | TOTAL | 85.977 | 88.996 | -3,39 |
| DICIEMBRE | DESCARGA | 6.482 | 6.757 | -4,07 |
| | CARGA | 87.271 | 89.778 | -2,79 |
| | TOTAL | 93.753 | 96.535 | -2,88 |
| ACUMULADO | TOTAL | 93.753 | 96.535 | -2,88 |